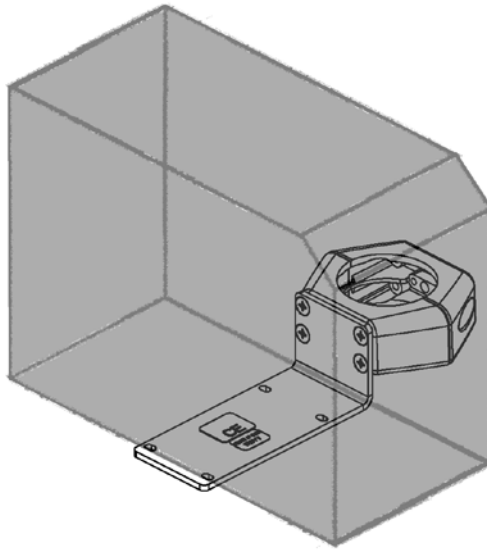


Installation Guide

Mounting Assembly for PRN-50M Plus (Refer to qualified personnel)

Purpose:

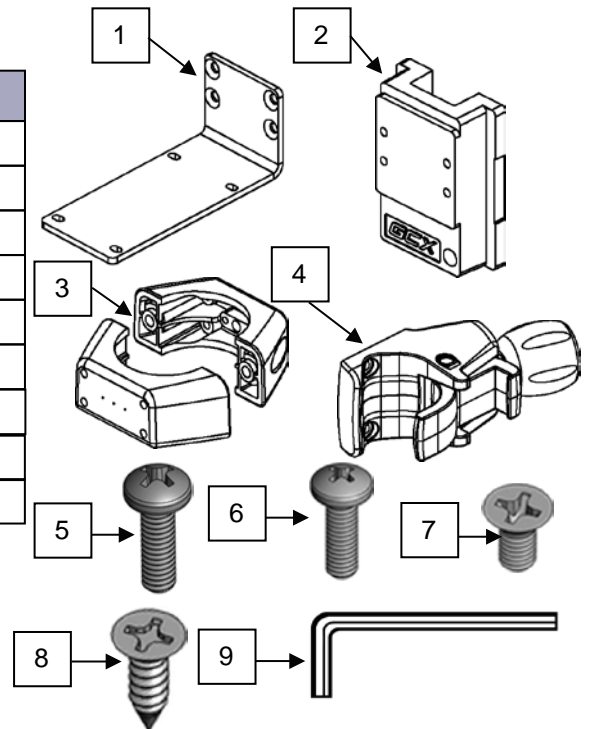
To describe the installation of the mounting options for the GE Healthcare PRN-50M Plus



Parts Reference

The following parts and hardware are included in this installation kit:

Item #	Description	Qty
1	Mounting Adaptor for PRN-50M Plus	1
2	Wall Channel Slide	1
3	Clamping Blocks for 2" Diameter Post	1
4	Pole/ Rail Clamp	1
5	10-32 x 9/16 Pan Head Machine Screw (PHMS)	2
6	M4 x 12 Pan Head Machine Screw (PHMS)	4
7	10-32 x 3/8 Flat Head Machine Screws (FHMS)	2
8	#10 x 5/8 Flat Head Sheet Metal Screws (FHSMS)	4
9	1/8" Hex Wrench	1

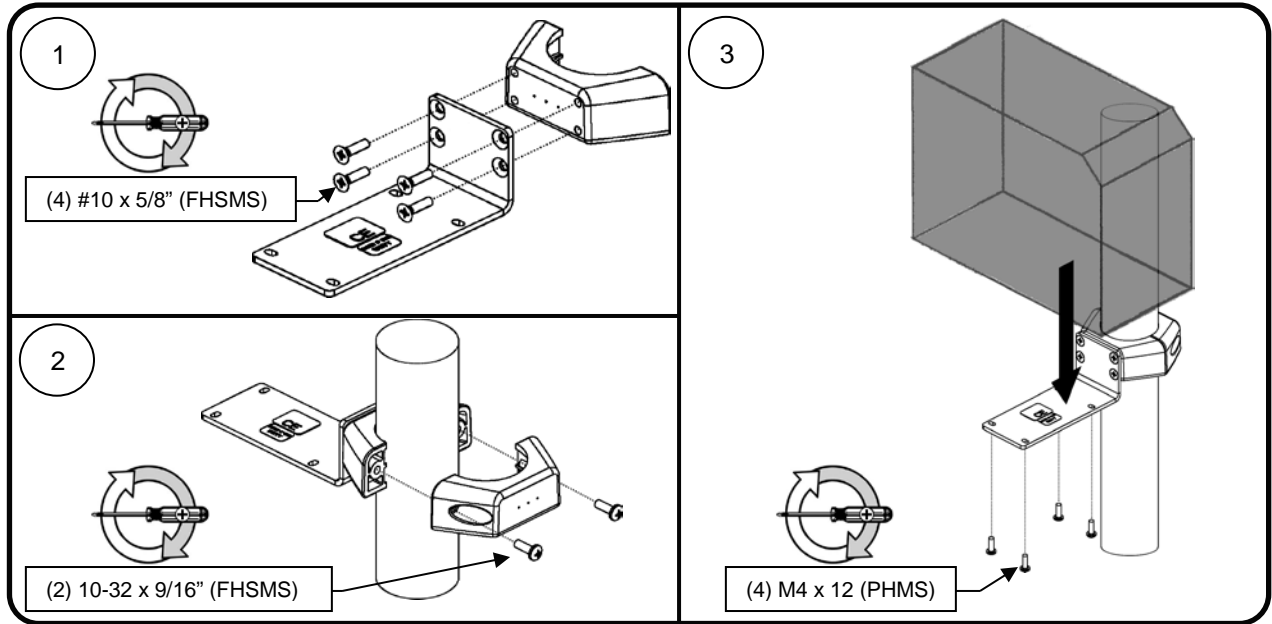


Tools Required:

- 1/8" Hex Wrench (provided)
- Phillips Screwdriver (not provided)

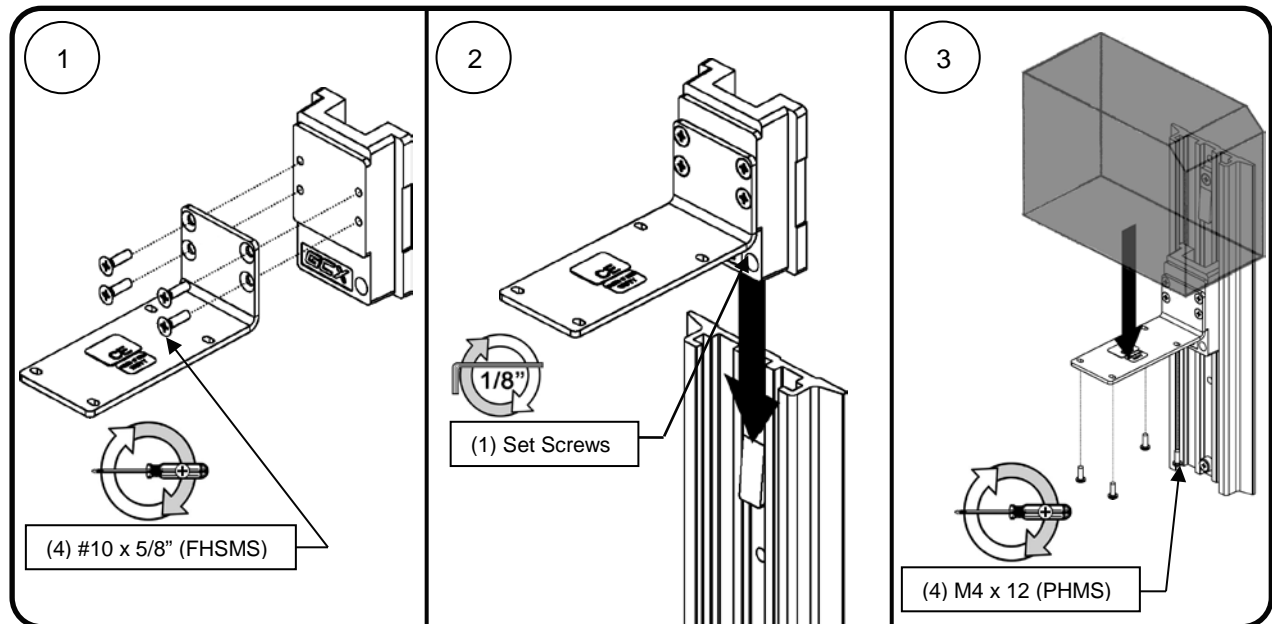
Mounting onto 2" Diameter (50.8 mm) Post (GCX Rollstands)

1. Fasten Mounting Adapter to Clamping Block (front half) with four (4) #10 x 5/8" Flat Head Sheet Metal Screws as shown.
2. Fasten Clamping Blocks to post with two (2) 10-32 x 9/16" Pan Head Machine Screws as shown.
3. Fasten Printer to Mounting Adapter with four (4) M4 x 12 mm Pan Head Machine Screws as shown.



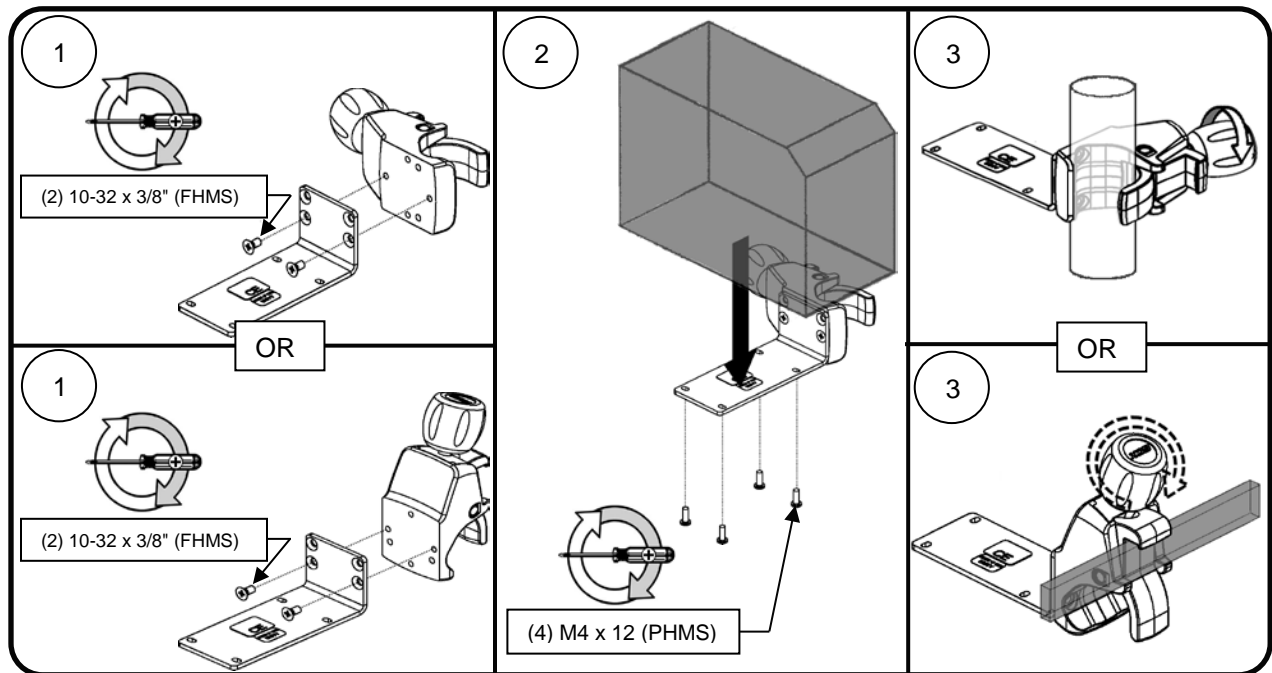
Channel Mounting

1. Fasten Mounting Adapter to Channel Slide with four (4) #10 x 5/8" Flat Head Sheet Metal Screws as shown.
2. Insert Channel Slide in to channel and set at desired elevation and secure by tightening set screw with 1/8" hex wrench (provided) as shown.
3. Fasten Printer to Mounting Adapter with four (4) M4 x 12 mm Pan Head Machine Screws as shown.



Post and Rail Mounting

1. Fasten Mounting Adapter to Clamp (horizontal or vertical) with two (2) 10-32 x 3/8" Flat Head Machine Screws as shown.
2. For Post Mounting, open Clamp by turning knob counterclockwise (CCW). Position Clamp around post and turn knob clockwise (CW) to tighten.
For Rail, open Clamp by turning knob counterclockwise (CCW). Position Clamp over rail as show and turn knob clockwise (CW) to tighten.
3. Fasten Printer to Mounting Adapter with four (4) M4 x 12 mm Pan Head Machine Screws as shown.



Routine Maintenance

Periodically inspect all fasteners associated with the mounting assembly. Tighten or Adjust as necessary for optimal operation and safety.

Cleaning the Mounting Assembly

1. The mounting assembly may be cleaned with most mild, non-abrasive solutions commonly used in the hospital environment (e.g. diluted bleach, ammonia, or alcohol solutions).
2. The surface finish will be permanently damaged by strong chemicals and solvents such as acetone or trichloroethylene.
3. Steel wool or other abrasive material should never be used.
4. Damaged caused by the use of unapproved substances or processes will not be warranted. We recommend testing of any cleaning solution on a small area of the mounting assembly that is not visible to verify compatibility.
5. Never submerge or allow liquids to enter the mounting assembly. Wipe any cleaning agents off the mounting assembly immediately using a water-dampened cloth. Dry the mounting assembly thoroughly after cleaning.

CAUTION: GCX makes no claims regarding the efficacy of the listed chemicals or processes as a means for controlling infection. Consult your hospital's infection control officer or epidemiologist. To clean or sterilize mounted devices or accessory equipment, refer to the specific instructions delivered with those products.